

# *The* MONOCOUE



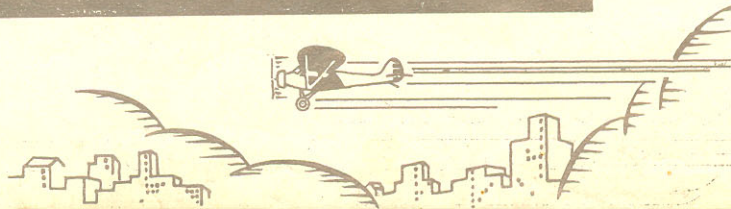
*America's Most Representative  
Small Airplane*

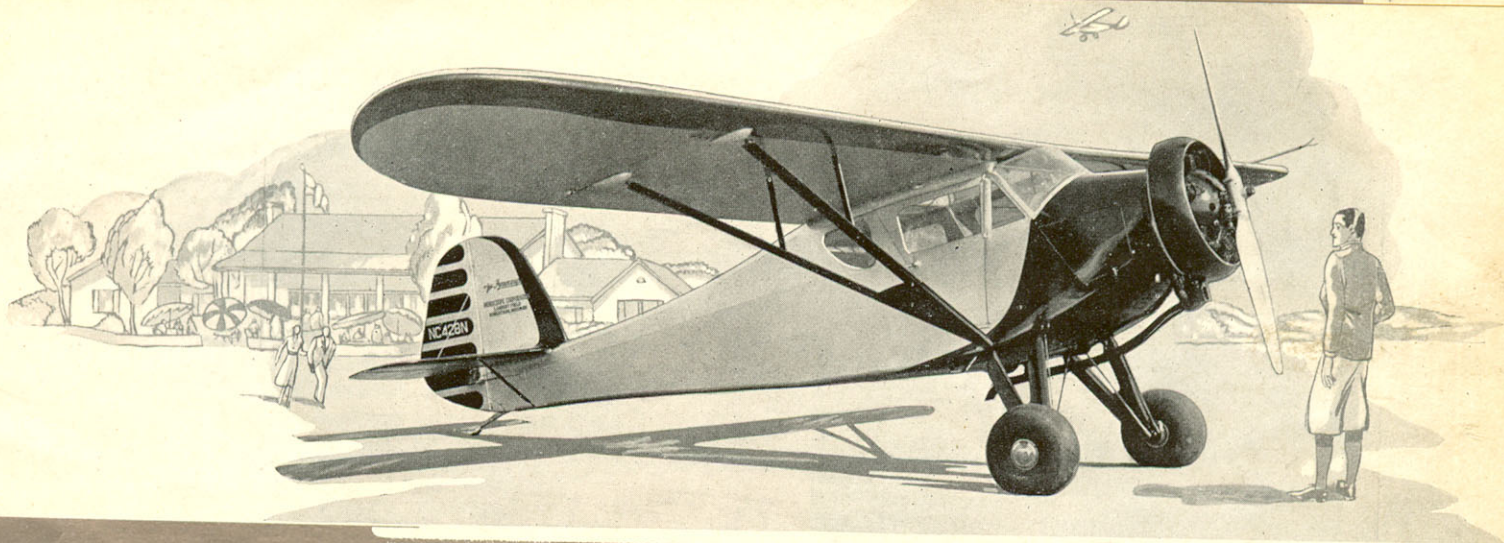
## MONOCOUE CORPORATION

LAMBERT FIELD - ROBERTSON, MO.

# *The* MONOCOUE POLICY *for* 1932

**W**E believe the primary purpose of an airplane is to render fast, economical transportation with the utmost comfort. We will adhere to designs which discriminate between merely airport use and highly efficient cross-country utility.





**THE MONOCOUPÉ 70**  
With Velie M5 Engine  
—at Robertson, Mo. \$2395.00  
*Description on opposite page.*

## THE MONOCOUE 100-125

Kinner-powered Monocoupes are especially popular with owners interested in quick get-away and amazingly rapid climb. Kinner engines have a wide acceptance among many users, and both of these sizes make ideal installations in the Monocoupe.

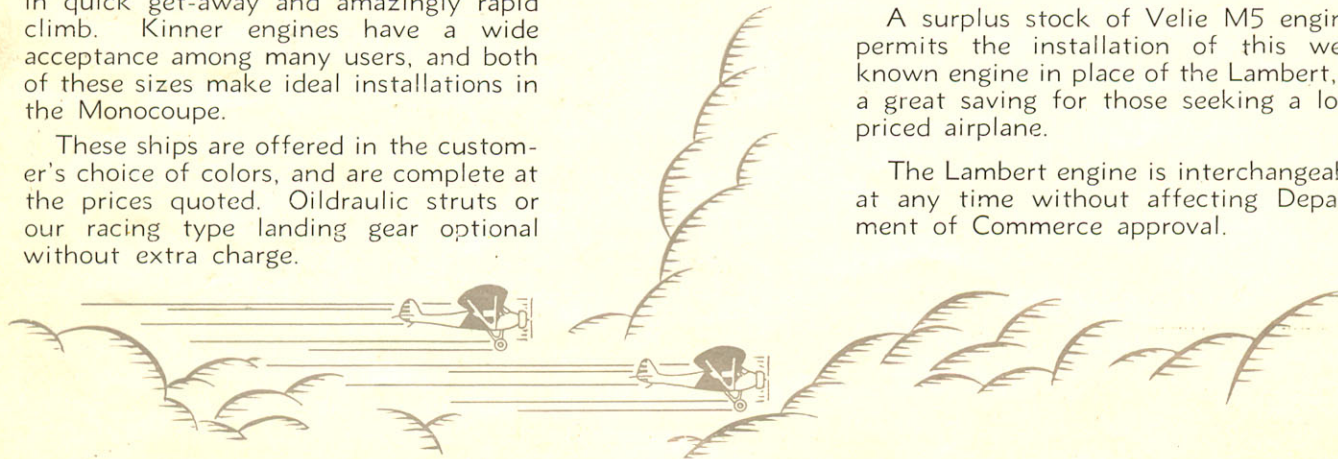
These ships are offered in the customer's choice of colors, and are complete at the prices quoted. Oildraulic struts or our racing type landing gear optional without extra charge.

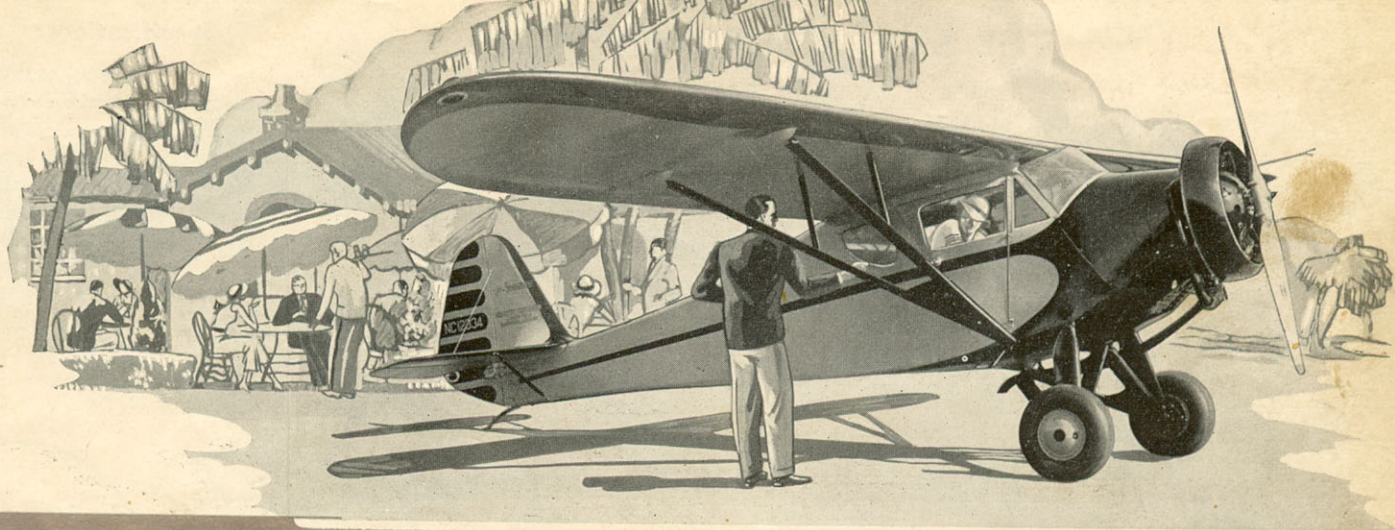
## THE MONOCOUE 70

The Monocoupe 70 is identical in structure with the Monocoupe 90.

A surplus stock of Velie M5 engines permits the installation of this well-known engine in place of the Lambert, at a great saving for those seeking a low-priced airplane.

The Lambert engine is interchangeable at any time without affecting Department of Commerce approval.





**THE MONOCOUE 90**  
With Lambert R266 Engine  
—at Robertson, Mo. \$3375.00  
*Description on following page.*

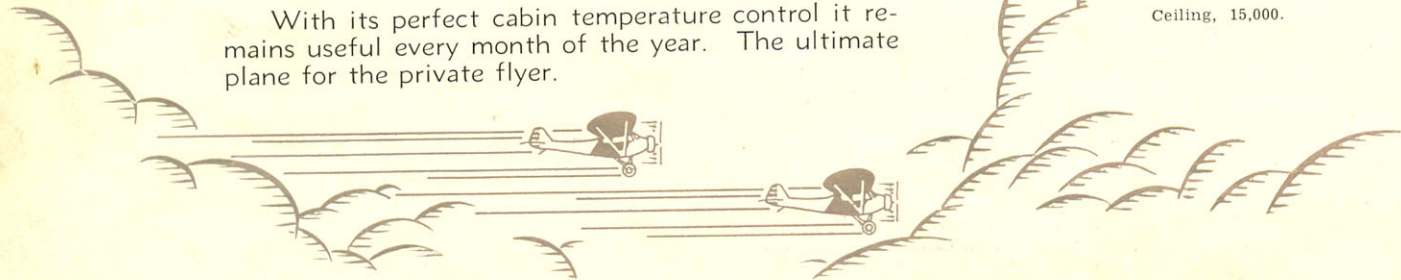
## THE MONOCOUE 90

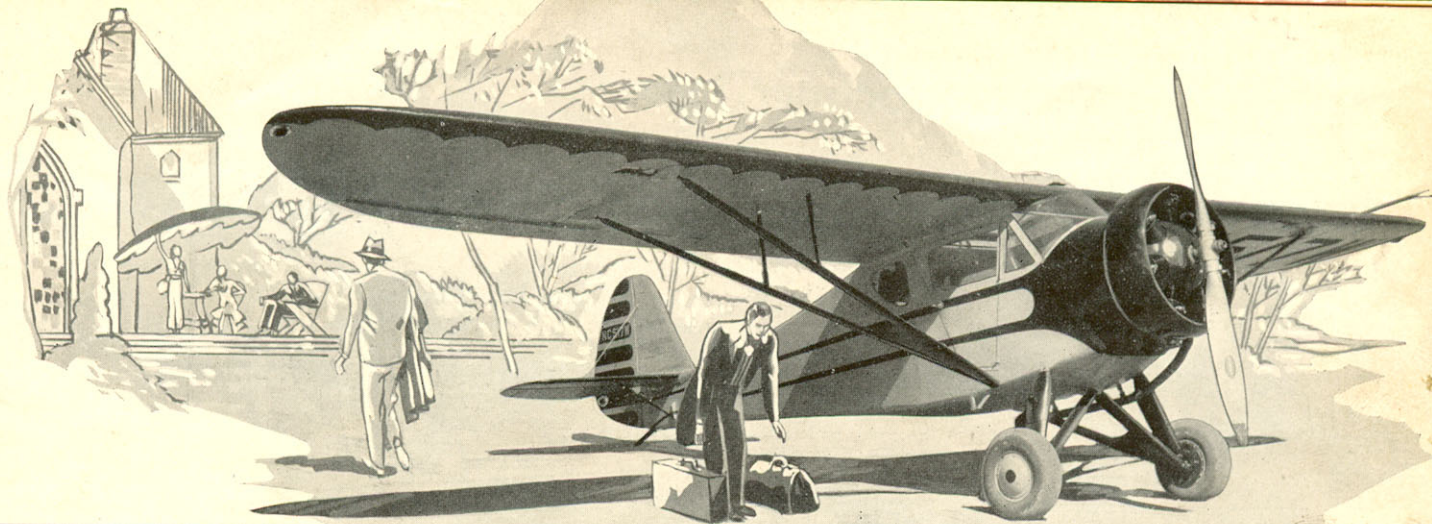
In this airplane is found the nearest approach to the one logical, economic reason for private ownership. The ship is well balanced, easy to fly, comfortable, sociable—it cruises along with most airplanes costing three times as much. It costs two and one-fourth cents per mile for fuel and engine maintenance. Never gets out of rig. One man moves it in and out of the hangar.

With its perfect cabin temperature control it remains useful every month of the year. The ultimate plane for the private flyer.

### Specifications:

Span, 32'; Length, 20'10";  
Height, 6'10"; Fuel capacity,  
30 gals.; Range, 540 mi.; Fuel  
consumption, 5.7 gals. per  
hour. Weight, empty, 891;  
Gross weight, 1585; High  
speed, 118; Landing speed,  
40; Cruising speed, 100;  
Climb 900 feet per minute;  
Ceiling, 15,000.





**THE MONOCOUE 110**  
With Warner Scarab Engine  
—at Robertson, Mo. \$4485.00  
; Description on following page.

## THE MONOCOUE 110

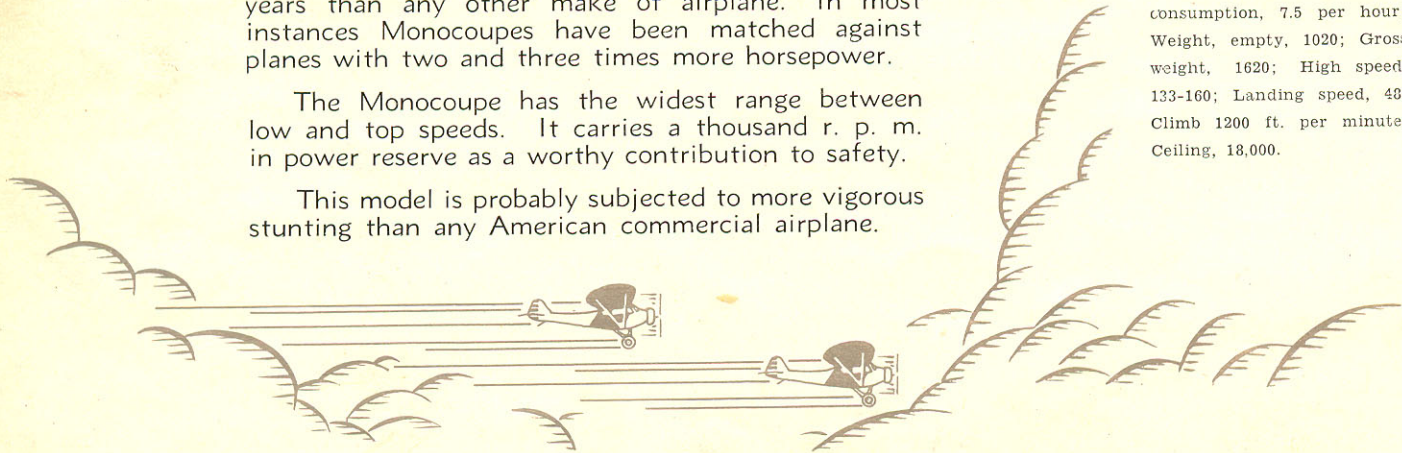
The Warner-powered Monocoupe has won more prizes for speed and efficiency during the past two years than any other make of airplane. In most instances Monocoupes have been matched against planes with two and three times more horsepower.

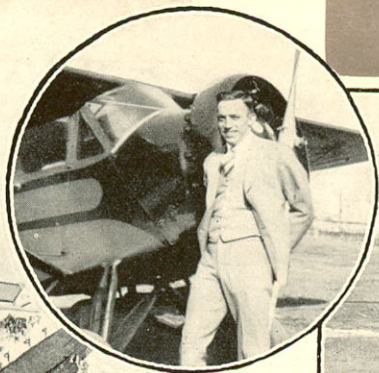
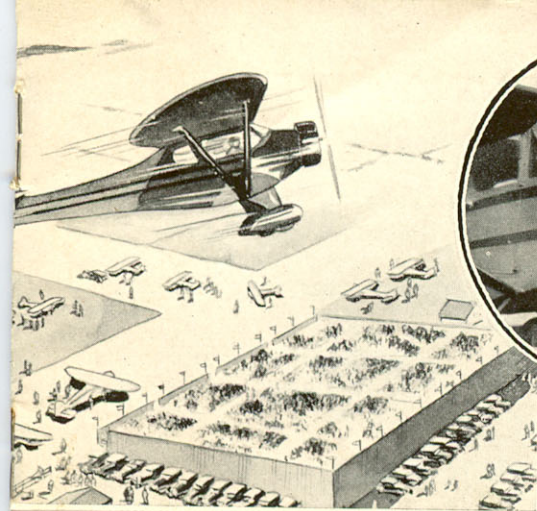
The Monocoupe has the widest range between low and top speeds. It carries a thousand r. p. m. in power reserve as a worthy contribution to safety.

This model is probably subjected to more vigorous stunting than any American commercial airplane.

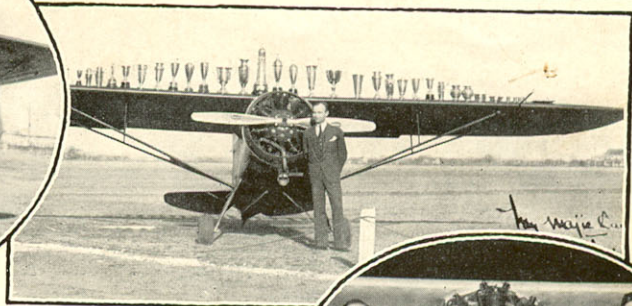
### Specifications:

Span, 32'; Length, 20'10";  
Height, 6'10"; Fuel capacity,  
30 gals.; Range, 460; Fuel  
consumption, 7.5 per hour;  
Weight, empty, 1020; Gross  
weight, 1620; High speed,  
133-160; Landing speed, 48;  
Climb 1200 ft. per minute;  
Ceiling, 18,000.





**JOHN LIVINGSTON**  
Aurora  
wants to win all the  
money, and frequently  
does.



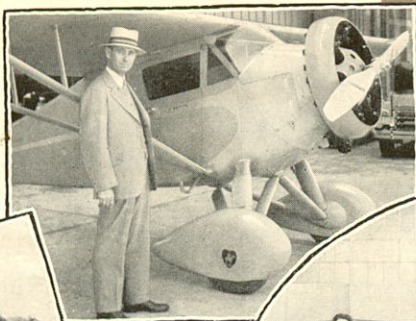
**PETER BROOKS**  
Aviation Country Club  
inspired customer and col-  
lector of Aerobatic trophies.



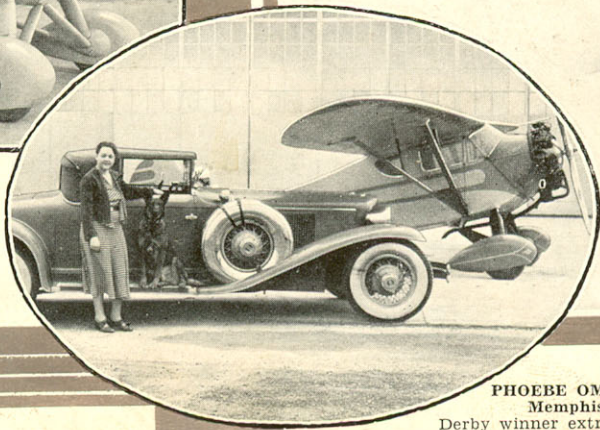
**WES SMITH & TONY LITTLE**  
Philadelphia  
have over sixty Monocoupe  
victories.

Monocoupe is not a racing  
been won by Monocoupes  
all other airplanes combined.

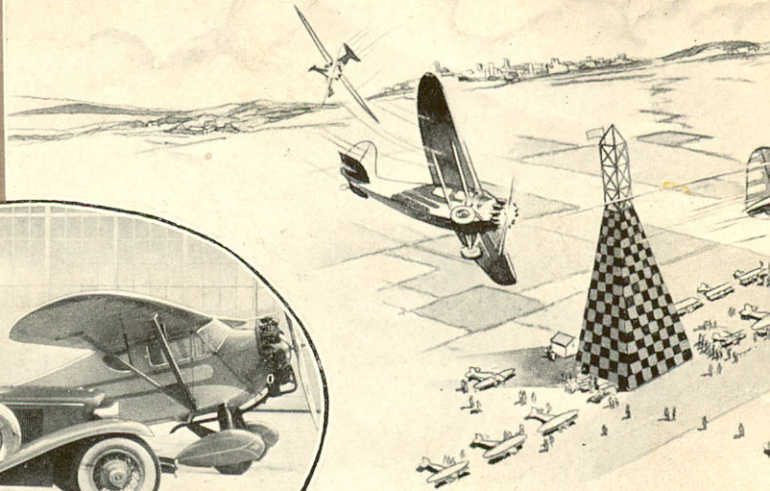
**DR. J. D. BROCK**  
 Kansas City  
 flies every day for  
 years and years.



**DON CARDIFF**  
 Bakersfield  
 goes deer hunting at 8300  
 feet in his Monocoupe.



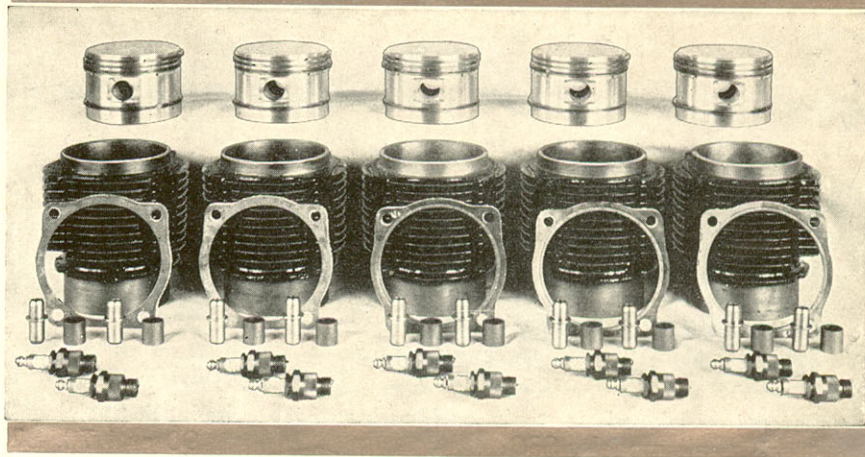
**PHOEBE OMLIE**  
 Memphis  
 Derby winner extraordinary  
 and her sweepstakes prize.



Despite the fact that the  
 airplane, more races have  
 during the past 2 years than

## THIS LAMBERT R266 ENGINE REPAIR KIT for \$100.00

No longer need you spoil the fun of flying by a constant thought of engine depreciation. For one hundred dollars you get five new cylinder barrels with pistons and rings fitted, a complete set of valve guides and rocker arm bushings, cylinder gaskets and ten spark plugs.



### Specifications:

5 cyl. radial; bore, 4.25 ins.; stroke, 3.75 ins.; displacement, 266 cu. ins.; 85 h. p. at 2250; 90 h. p. at 2375; weight, 214 lbs.; length, 30 $\frac{3}{4}$  ins.; diameter, 33 ins.; two Scintilla Mags; Stromberg NA-R3 Carbureter.

3395  
1001  
251  
121  
145  
35  
10  
305

2395  
579  
1816

## OPTIONAL EQUIPMENT

Townend Anti-Drag Ring, all models, \$45  
Direct Electric Starter and Battery (in-  
stalled), \$250  
Wheel Pants, all models (installed), \$150  
Goodyear Air Wheels, no extra charge if  
specified with order.  
Chromium-plated controls and collector  
ring, all models, \$30

Left-hand throttle in addition to center,  
all models, \$25  
Tail skid wheel, all models, \$20  
Pontoon for Monocoupe 90, \$800  
Steel Propeller for Monocoupe 70 or 90,  
\$100  
Navigation lights, complete for models  
90 and 70, \$20

3375  
45  
150  
25  
160  
30  
2775

43775  
945  
2830

44185  
220  
4705  
1185  
3520